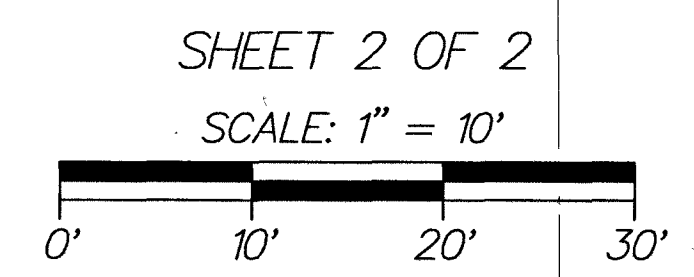


THIS INSTRUMENT WAS PREPARED BY PAUL D. ENGLE, IN THE OFFICE OF ENGLE LAND SURVEYING LLC, 955 N.W. 17TH AVENUE, SUITE K-1, DELRAY BEACH, FLORIDA 33445 (561) 276-4501

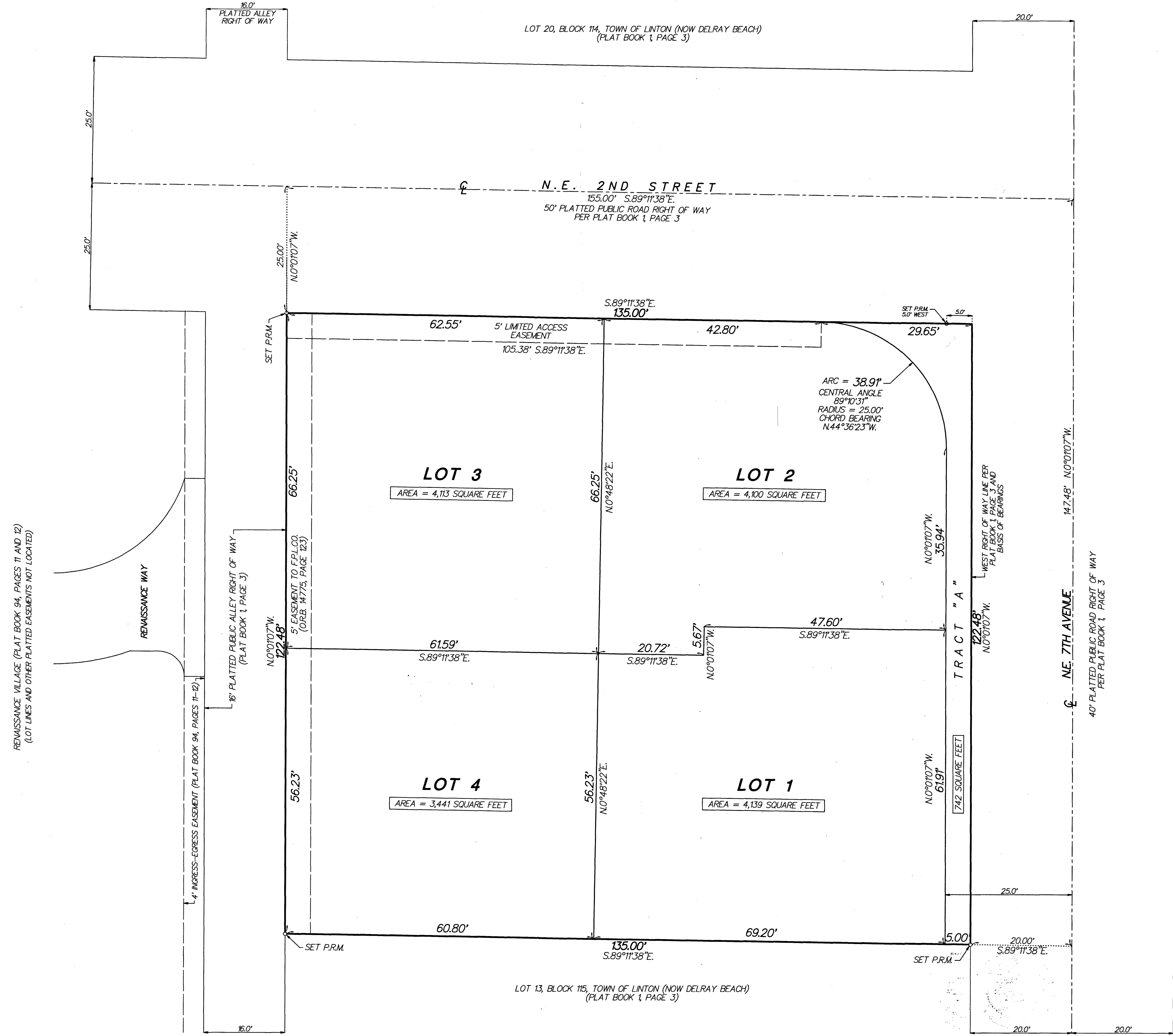
ASEA 4

BEING A REPLAT OF LOTS 11 AND 12, BLOCK 115, TOWN OF LINTON (NOW DELRAY BEACH), PLAT BOOK 1, PAGE 3 (P.R.P.B.CO.), BEING IN SECTION 16, TOWNSHIP 46 SOUTH, RANGE 43 EAST, CITY OF DELRAY BEACH, PALM BEACH COUNTY, FLORIDA



193

LEGEND:
 ☒ = CENTERLINE
 P.R.M. = PERMANENT REFERENCE MONUMENT (4"x4" CONCRETE MONUMENT STAMPED "PRM LBB447") UNLESS STATED OTHERWISE
 P.R.M. (NAIL) = PERMANENT REFERENCE MARKER (NAIL AND DISK STAMPED "PRM LBB447")
 P.R.P.B.CO. = PUBLIC RECORDS OF PALM BEACH COUNTY
 SECTION 17/46/43 = SECTION 17, TOWNSHIP 46 SOUTH, RANGE 43 EAST
 O.R.B. = OFFICIAL RECORDS BOOK
 L.B. = LICENSED BUSINESS



AREA TABULATION

LOT/TRACT	SQUARE FEET	ACRES
LOT 1	4,139	0.0950
LOT 2	4,100	0.0941
LOT 3	4,113	0.0944
LOT 4	3,441	0.0790
TRACT "A"	742	0.0170